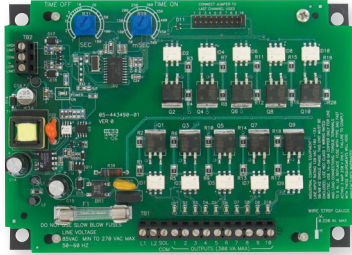
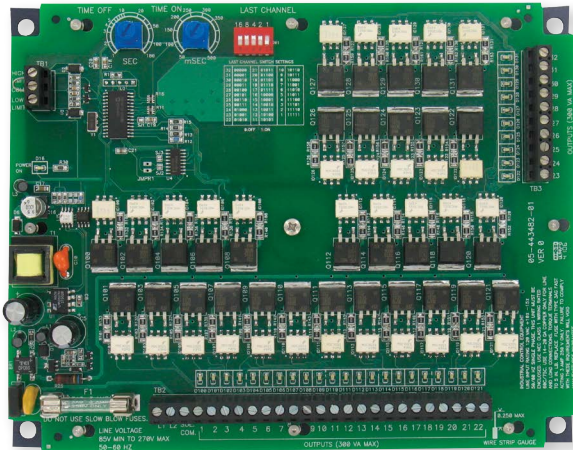


TIMER CONTROLLERS

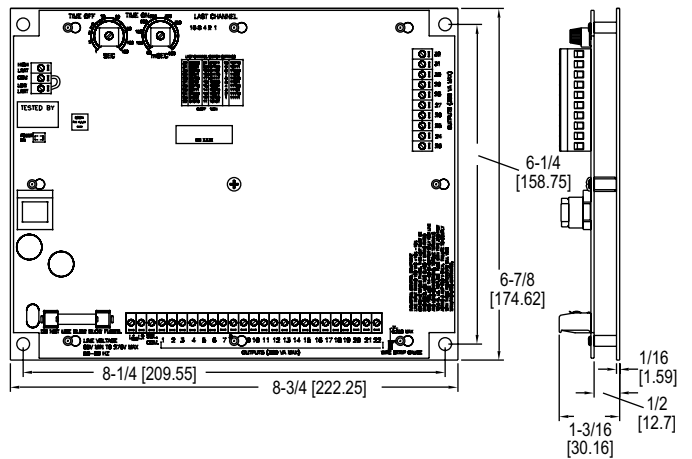
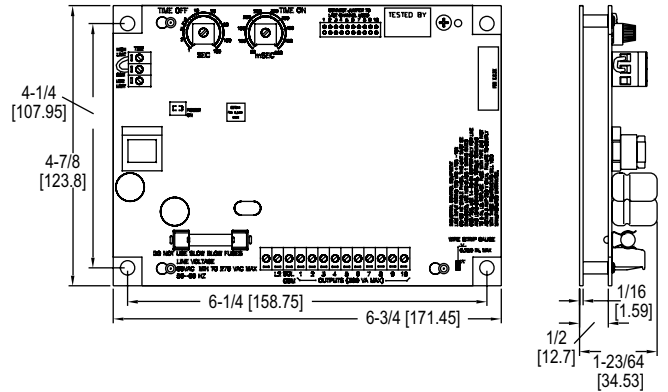
With Universal Power For Both 120 and 220 VAC



4 thru 10 channel board



22 and 32 channel board



The **Series DCT600 Timer Controllers** are timing systems for pulse-jet type dust collectors or pneumatic conveying systems in either continuous or on-demand cleaning applications. It provides either 4, 6, 10, 22, or 32 channels, and if fewer channels are required than is available on the board, a shorting plug or dip switch allows selection of the last used channel. The new enhanced board circuitry of the DCT600 synchronizes the on-time pulse to the power line to achieve a pulse stability of ± 1 msec.

BENEFITS/FEATURES

- Better synchronized on-time pulse to the power line for better pulse stability
- Adjustable potentiometers to select time-on and time-off settings
- Simple and easy to use design

APPLICATIONS

- Dust collection
- Pneumatic conveying

MODEL CHART		
Model	Description	No. of Channels
DCT604	Timer controller	4
DCT606	Timer controller	6
DCT610	Timer controller	10
DCT622	Timer controller	22
DCT632	Timer controller	32

OPTIONS	
To order add suffix:	Description
-L	Mounting bracket for field retrofits: 8-1/4" x 6-1/4" (209.55 mm x 158.75 mm)
-WP	Weatherproof housing: 4 thru 10 channel only Weatherproof housing: 22 & 32 channels

Note: L mounting bracket available with 4, 6, or 10 channel models only.

SPECIFICATIONS*

- Output Channels:** 4, 6, 10, 22 and 32 channels available.
 - Power Requirements:** 85-270 VAC.
 - Power Consumption:** 1.2 W.
 - Solenoid Supply:** 300 VA.
 - Fuse:** Type 3 AG, 3 A @ 250 VAC.
 - Temperature Limits:** -40 to 140°F (-40 to 60°C).
 - Storage Temperature Limits:** -40 to 176°F (-40 to 80°C).
 - On Time:** 50 ms to 500 ms.
 - On Time Accuracy:** $\pm 5\%$ of setting.
 - On Time Stability:** ± 1 ms.
 - Off Time:** 1 s to 180 s.
 - Off Time Accuracy:** 5% of setting.
 - Weight:** 9 oz (255 g).
 - Compliance:** CE, cULus.
- *Additional specifications on IOM.