

MOTION110

MOTION RECORDER



Features

- 5 year battery life
- High speed download
- Miniature size
- Reusable
- Real-time operation
- Programmable engineering units
- User-friendly
- Low cost

Applications

- Activity monitoring
- Advertising interest monitoring
- Animal habitat studies
- Occupancy studies
- Office space studies
- Traffic studies
- Security monitoring
- Marketing studies



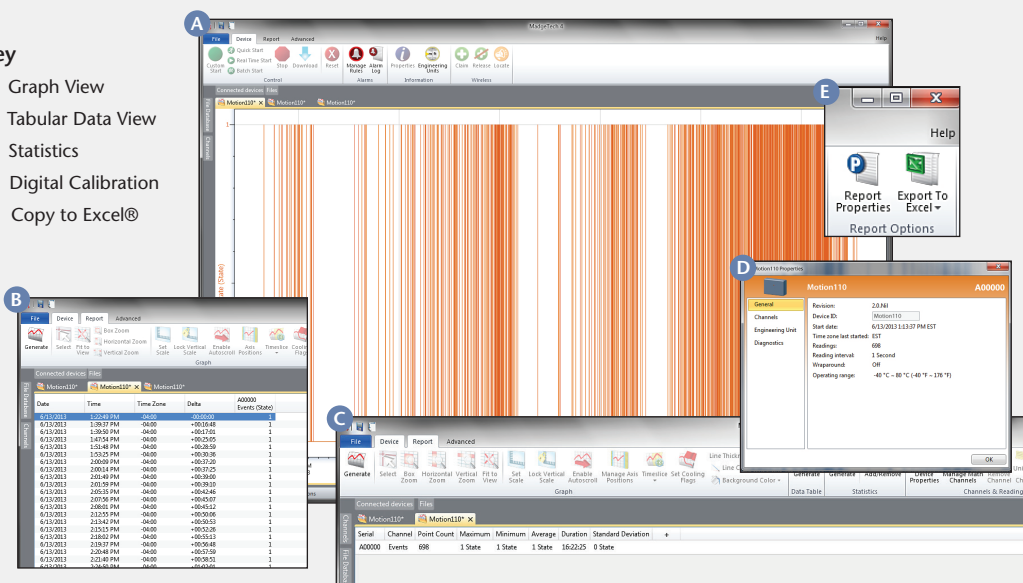
The Motion110 is a miniature, low cost, recording device which senses motion and records time intervals during which motion occurs. The device can record up to 13,107 time stamped events and will not consume memory when it doesn't record motion.

Once activated the Motion110 senses and records transition or state changes at the input. The devices real-time clock ensures that all data is time and date stamped. The storage medium is non-volatile solid state memory, providing maximum data security even if the battery becomes discharged. The device can be started and stopped directly from your computer and its small size allows it to fit almost anywhere. The Motion110 makes data retrieval quick and easy. Simply plug it into an empty COM or USB port and our user-friendly software does the rest.

MADGETECH DATA LOGGER SOFTWARE

Key

- A** Graph View
- B** Tabular Data View
- C** Statistics
- D** Digital Calibration
- E** Copy to Excel®



Software Features:

- Multiple graph overlay
- Statistics
- Digital calibration
- Zoom in/ zoom out
- Lethality equations (F0, PU)
- Mean Kinetic Temperature
- Full time zone support
- Data annotation
- Min./Max./Average lines
- Data table view
- Automatic report generation
- Summary view
- Multilingual

MOTION110 SPECIFICATIONS*

*SPECIFICATIONS ARE SUBJECT TO CHANGE WITHOUT NOTICE. SPECIFIC WARRANTY REMEDY LIMITATIONS APPLY. CALL 1-603-456-2011 OR GO TO WWW.MADGETECH.COM FOR DETAILS.

Detection Distance:	5M
Detection Range:	>80°
Time Resolution:	1 second (reading rate dependent)
Engineering Units:	User may define units up to 10 characters in length. This value is stored within the device.
Real Time Recording:	May be used with PC to monitor and record data in real time
Memory:	13,107 events; software configurable memory wrap
**Reading Interval:	1 reading every second to 1 every 12 hours
Start Modes:	Software programmable immediate start or delay start up to six months in advance
Visual Indicator:	LED flashes to indicate events
Battery Type:	3.6V lithium battery included; user replaceable
Battery Life:	5 years typical at 25°C

**Device will record one event per user defined reading interval.

Data Format:	Date and time stamped events (true/false), user defined engineering units
Time Accuracy:	±1 minute/month (at 25 °C, RS232 cable not in use)
Computer Interface:	PC serial or USB (interface cable required); 57,600 baud
Software:	XP SP3/Vista/Windows 7/Windows 8
Operating Environment:	-20 to +60°C, 0 to 95%RH non-condensing
Dimensions:	1.7" x 2.7" x 0.8" (44mm x 69mm x 21mm)
Weight:	1.1 oz (30 g)
Materials:	ABS plastic
Approvals:	CE

BATTERY WARNING: FIRE, EXPLOSION, AND SEVERE BURN HAZARD. DO NOT RECHARGE, DISASSEMBLE, HEAT ABOVE 212°F, INCINERATE OR EXPOSE CONTENTS TO WATER.

ORDERING INFORMATION

MODEL	DESCRIPTION
MOTION110	Motion Recorder with 5 year battery
IFC110	Software, manual and RS232 interface cable
IFC200	Software, manual and USB interface cable
LTC-7PN	Replacement battery for Motion110

ASK ABOUT OUR OTHER DATA LOGGERS

- Temperature
- Humidity
- Pressure
- pH
- Level
- Shock
- LCD Display
- Pulse/Event/State
- Current
- Voltage
- Wireless
- Intrinsically Safe
- Spectral Vibration
- Motion

For Quantity Discounts call 603-456-2011 or email sales@madgetech.com