

SHOCK-EB-MAG-KIT

MAGNETIC KIT ASSEMBLY INSTRUCTIONS

MATERIALS



6 SCREWS



6 LOCK NUTS



ALLEN WRENCH



1/2" WRENCH OR
PLIERS (Not Included)



6 MAGNETS



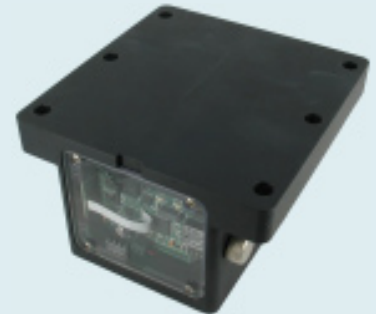
DATA LOGGER

STEP 1

Remove a magnet from the stack (the white rings are provided for easier removal).

STEP 2

Place the data logger with the largest side facing upwards (label down). There will be six holes around the perimeter of the face.



STEP 3

Take one magnet, ring side up, and place it on one of the 6 holes.



STEP 4

Take one of the screws and insert it down in the magnet opening through the logger hole out to the bottom side of the logger.



STEP 5

Take one of the lock nuts and fit it onto the exposed screw on the underside of the logger, hex side first.



STEP 6

Using the allen wrench and either a 1/2" wrench or pliers, insert the allen wrench in the opening at the head of the screw, and fit the wrench/pliers around the lock nut, turn the allen wrench clockwise and the pliers counterclockwise, in order to tighten it.



STEP 7

Repeat steps one through six for the remaining holes.

